



3M™ Steri-Strip™ Adhesive Skin Closures

The closure your
patients need



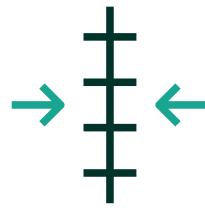
Navigating the road to recovery

You can support patients on their journey to healing by choosing the appropriate closure to keep wounds closed. 3M™ Steri-Strip™ Adhesive Skin Closures can be used in skin approximation of lacerations and surgical incisions. They may also be used in conjunction with staples and sutures or after their removal for wound support.

Compared to traditional methods,
Steri-Strip Adhesive Skin Closures:



May improve patient comfort compared to sutures^{1,2}



May allow early removal of sutures and staples³



Save costs compared to sutures and tissue adhesives⁴



Save time compared to sutures⁵

3M™ Steri-Strip™ Adhesive Skin Closures

3M™ Steri-Strip™ Adhesive Skin Closures (Reinforced)

Steri-Strip Adhesive Skin Closures (Reinforced) may be used in the closure of lacerations, surgical incisions and following early suture/staple removal.

- Non-woven, rayon backed material reinforced with filaments for strength
- Breathable^{6,7}
- Good adhesion to skin^{8,9}
- Minimal adhesive residue^{9,10}

R1540 (3mm x 75mm)

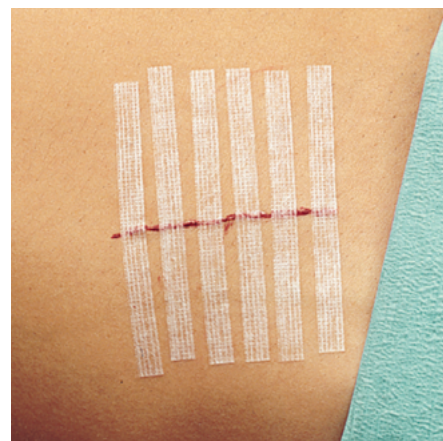
R1541 (6mm x 75mm)

R1542 (6mm x 38mm)

R1546 (6mm x 100mm)

R1547 (12mm x 100mm)

R1548 (25mm x 125mm)



3M™ Steri-Strip™ Blend Tone Skin Closures

Steri-Strip Blend Tone Skin Closures may be chosen when support is needed with a less noticeable look.

- The light colour blends with many skin tones, for a more cosmetically pleasing appearance
- Breathable^{6,7}
- Good adhesion to skin^{8,9}
- Minimal adhesive residue⁹

B1551 (6mm x 75mm)



Ordering information

Catalogue Number	Size	Closures/Envelope	Envelopes/Box	Boxes/Case
3M™ Steri-Strip™ Adhesive Skin Closures (Reinforced)				
R1540	3 mm x 75 mm	5	50	4
R1541	6 mm x 75 mm	3	50	4
R1542	6 mm x 38 mm	6	50	4
R1546	6 mm x 100 mm	10	50	4
R1547	12 mm x 100 mm	6	50	4
R1548	25 mm x 125 mm	4	25	4
3M™ Steri-Strip™ Blend Tone Skin Closures				
B1551	6 mm x 75 mm	3	50	4

For more information, please contact your local Solventum representative, or call customer services;

Australia 1800 945 183
New Zealand 09 884 2001



Contact us

References:

1. Fairclough JA, Moran CG. The use of sterile adhesive tape in the closure of arthroscopic puncture wounds: A comparison with single layer nylon closure. Ann. R. Coll. Surg. Engl. 1987;69:140-141
2. Webster DJT, Davis PW. Closure of abdominal wounds by adhesive strips: A clinical trial. Br. Med. J. 1975;3:696-698
3. Traub AC, Quattlebaum FW. Early staple removal and replacement by skin tapes. Contemporary Surgery. Vol 18, 1981
4. Zempsky WT, Zehrer CL, Lyle CT, Hedblom EC. Economic comparison of methods of wound closure: Wound closure strips vs. sutures and wound adhesives. International wound journal. 2005;2:272-281
5. Harold KL, Goldstein SL, Nelms CD, et al. Optimal closure method for five-millimeter trocar sites. Am. J. Surg. 2004;187:24-27
6. Edlich RF, Rodeheaver G, Kuphal J, et al. Technique of closure: Contaminated wounds. JACEP. 1974(Nov/Dec):375-381
7. Solventum data on file LAB-SUPPORT-05-395832
8. Solventum data on file CLIN-MISC-US-05-001028
9. Solventum data on file CLIN-MISC-US-05-171149
10. Solventum data on file CLIN-MISC-US-05-136271



KCI Medical Australia Pty Limited

Level 3, Building A,
1 Rivett Road,
North Ryde, NSW 2113
Phone: 1800 945 183

KCI New Zealand Unlimited

Suite 1701, Level 17, PwC Tower,
15 Customs Street West,
Auckland 1010
Phone: 09 884 2001

© Solventum 2025. All Rights Reserved. Solventum and the S logo are trademarks of Solventum or its affiliates. 3M and the 3M logo are trademarks of 3M. Other trademarks are the property of their respective owners. ANZ_70-2013-1299-1