



**3M** Science.  
Applied to Life.™

# Principles and competency checklist

3M™ Ioban™ 2 Antimicrobial Incise Drapes

A summary of instructions for the safe application and removal of:

## 3M™ Ioban™ 2 Antimicrobial Incise Drapes

## 3M™ Ioban™ 2 Antimicrobial Incise Drapes EZ

## 3M™ Ioban™ 2 Antimicrobial Incise Drapes Framed Delivery

1

### Clean the skin

- ▶ Clean the skin with the surgical prep and allow to dry fully before applying the Ioban incise drape.

2a

### 3M™ Ioban™ 2 Antimicrobial Incise Drape application

Product codes: 6635, 6640EU, 6650EU, 6648EU, 6651EU

- ▶ Peel open the Ioban incise drape packaging and remove drape. With two people, remove the paper backing liner, keeping slight tension on the drape as the liner peels gently away from the drape.
- ▶ As the liner unfolds it will reveal a 'STOP' sign. Hold the drape over the intended incision site. To ensure the correct application of the Ioban incise drape hold the drape at its corners with low tension and begin to lower onto the skin. Applying the drape under excessive tension can cause skin trauma and tension blisters.
- ▶ Smooth the Ioban drape with a sterile swab to ensure secure adherence to the skin.
- ▶ Remove the remainder of the backing liner and discard. Smooth the entire surface with the swab one final time.

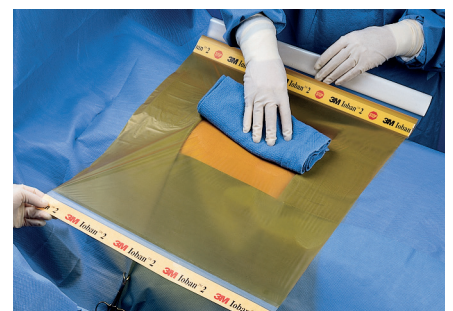
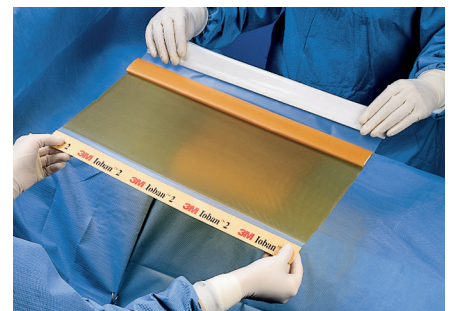


2b

### 3M™ Ioban™ 2 Antimicrobial Incise Drape EZ application

Product codes: 6640EZE, 6650EZE, 6648EZE, 6651EZE

- ▶ Peel open the Ioban incise drape packaging and remove drape. Then remove the paper overwrap whilst maintaining integrity of the drape. Hold the drape with printed side facing up and separate the printed handle from the white handle. The Ioban incise drape will need to be opened fully in order to adhere to the patient's body. For best results a two person application is recommended.
- ▶ Standing on opposite sides of the table one person holds the printed drape handle with the printed side up above the patient. The second person separates the printed label from the white edge liner and pulls the white edge liner evenly away from the person opposite them.
- ▶ To ensure correct application of the Ioban incise drape, keep it as wrinkle free as possible, each person should hold the outer corners of the drape.
- ▶ Position the drape over the incision site and adhere to the patient using a sterile towel. Do not stretch the Ioban incise drape when adhering to the patient's skin. Press down firmly on the drape to achieve good adherence and to achieve optimal microbial action. Smooth the film in place without tension working away from the incision site to achieve adhesion that is as wrinkle free as possible.
- ▶ Once the drape has been applied you may remove the rest of the liner and remove the printed handle by placing your thumb on the corner of the drape and peeling the printed handle off.





## Further information

Video and poster guides for the application and removal of loban incise drapes are available, please request via your 3M representative.

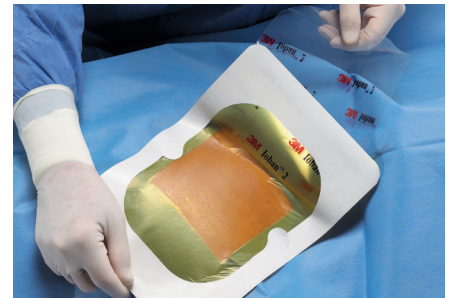
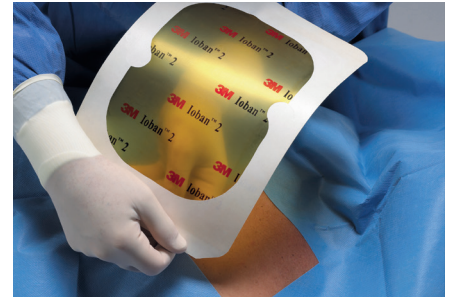


# 2

## 3M™ loban™ 2 Antimicrobial Incise Drape framed delivery application

Product codes: 6661EZ

- ▶ The loban incise drape should be offered to the scrub practitioner by peeling open the pouch by the circulating practitioner.
- ▶ Grasp the plastic backing liner, holding the drape at the top and peel the backing away from the drape.
- ▶ Adhere the drape to the surgical area when the release liner has been removed. Do not apply under tension as this can lead to skin trauma and blistering.
- ▶ Remove the white paper frame in two pieces and discard.



# 3

## Application to an area where limb mobilisation or retraction is required

- ▶ If an loban incise drape is to be applied to an area where limb mobilisation or retraction is required ensure the limb is bent into position before the drape is applied. It is important to know that the drape can shrink back to its original shape. If the drape is not able to return to its original shape then this can cause drape lift and skin blistering. For example, to enable correct application to a knee ensure the knee is bent to 30 degrees.

# 4

## Removal the loban incise drape

- ▶ To remove the loban incise drape from the incision edges prior to skin closure, pinch the drape film near the edge of the incision to create a crease. Pull up on the crease and gently separate from the skin at the incision edge exposing about 2cm of skin at either side of the incision edge. After skin closure cover the incision with the wound dressing or a clean dry swab prior to removal.
- ▶ To remove the loban incise drape fold the drape with attached surgical drapes back on itself at a 180 degree angle using a 'low and slow' technique especially around the incision. Do not pull up on the drape (i.e. at an 90 degree angle) as this will cause trauma to the skin.



## Key loban incise drape contraindications

- ▶ Do not use loban incise drapes on patients with a known sensitivity to iodine and do not use on neonates.
- ▶ Defibrillation cannot be performed through loban incise drapes as this may cause arcing and ineffective defibrillation or patient injury may occur.
- ▶ Do not stretch the incise drape during application onto the patient's skin.

# 3M™ Ioban™ 2 Antimicrobial Incise Drapes

## Competency checklist

The purpose of this checklist is to ensure you are able to demonstrate an understanding of the correct steps to apply and remove Ioban incise drapes including;

- ▶ Correct and safe preparation
- ▶ How to apply the incise drape to the surgical site to prevent drape lift and skin complications
- ▶ How to remove the incise drape from the surgical site safely to prevent skin complications

Name

Job title

### Competency checklist

Assessed by:

Date:

Describe the correct preparation of the skin prior to application of Ioban incise drape

Describe the correct application of  
3M™ Ioban™ 2 Antimicrobial Incise Drape

Describe the correct application of  
3M™ Ioban™ 2 Antimicrobial Incise Drape EZ

Describe the correct application of  
3M™ Ioban™ 2 Antimicrobial Incise Drape Framed Delivery

Explain why in some procedures you should bend the limb before application of the Ioban incise drape

Describe how to correctly remove the incise drape to protect the incisional skin edges

Describe the correct removal of Ioban Antimicrobial Incise Drape using the low and slow technique

Describe when it is not appropriate to use an Ioban incise drape

Information about you that you disclose to 3M United Kingdom PLC will be kept confidential. We will only use the details provided for the purposes of generating a customer report. Since 3M United Kingdom PLC is part of the global 3M company, the information that you will provide us with will be stored on 3M's servers outside of Europe and other 3M companies or business partners may process this information on 3M United Kingdom PLC's behalf, but always under strict conditions of confidentiality. 3M United Kingdom PLC will keep this information to enable it to properly and effectively administer and monitor the customer relationship it has with you.

**3M United Kingdom PLC**  
Charnwood Campus  
10 Bakewell Road  
Loughborough  
LE11 5RB  
01509 611 611

**3M Ireland Ltd**  
The Iveagh Building  
Carrickmines Park  
Carrickmines  
Dublin 18  
00 353 (01) 280 3555

**[www.3M.co.uk/medical](http://www.3M.co.uk/medical)**

OMG203833.  
3M and Ioban are trademarks  
of 3M Company. © 3M 2021.

