

3M™ Prevena™ Therapy

# The power to protect

Advancing the standard of care  
for general surgery incisions  
beyond the operating room



# Patient care following general surgery goes beyond the operating room.

In an increasingly overwhelmed healthcare system, surgeons are asked to do more with fewer resources, potentially creating complications for patients that extend beyond the operating room. These complications can create a ripple effect of consequences, like disrupted healing, extended hospital stays and poor patient outcomes.

## Managing the ripple effect

Today's complex care environment makes protecting against the ripple effect of surgical site complications a priority, and clinicians are increasingly adopting lower-touch solutions that promote:

- Efficiency and cost-effectiveness
- Minimal complications
- Home-based recovery
- Minimal hospital stays
- Low readmissions
- Telehealth consultations
- Portability of care

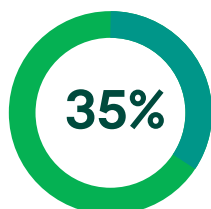
## Recognising the risks of abdominal surgery

The risk of acquiring a surgical site infection (SSI) varies across different types of surgeries, typically ranging between 2-5%<sup>1-3</sup>. However, this risk further increases in abdominal surgeries, due to bowel involvement and the heightened risk of fecal spillage, making contamination more likely.

Emergency procedures are particularly challenging, as patients often present with suboptimal risk factors and poor physiological reserves. Stoma creation and closure are also associated with a high risk of SSI and even planned colorectal surgeries carry similar risks.

Proactive risk management of the surgical incision using closed incision negative pressure wound therapy is a technique surgeons can to utilise to help to mitigate this risk.

### Surgical site infections complications:



SSI rate across open abdominal procedures<sup>4</sup>



of gastrointestinal procedures<sup>5-6</sup>



SSI rates following colorectal surgery<sup>7</sup>





# Extend your control over postoperative healing.

3M™ Prevena™ Therapy is designed for the management of closed incisions, to help reduce the risk of post-operative complications, such as infection. It helps protect the incision site after surgery for up to 7 or 14 days,\* extending your control over postoperative healing, especially in patients at risk of developing complications.

Prevena Therapy offers surgeons the confidence to help protect patients beyond the operating room.



Acting as a barrier to external contamination.



Decreasing lateral tension of sutured/stapled incisions.<sup>8</sup>



Delivering continuous -125 mmHg up to 7 or 14 days.\*



Removing fluids and infectious materials.\*\*



Helping to hold incision edges together.



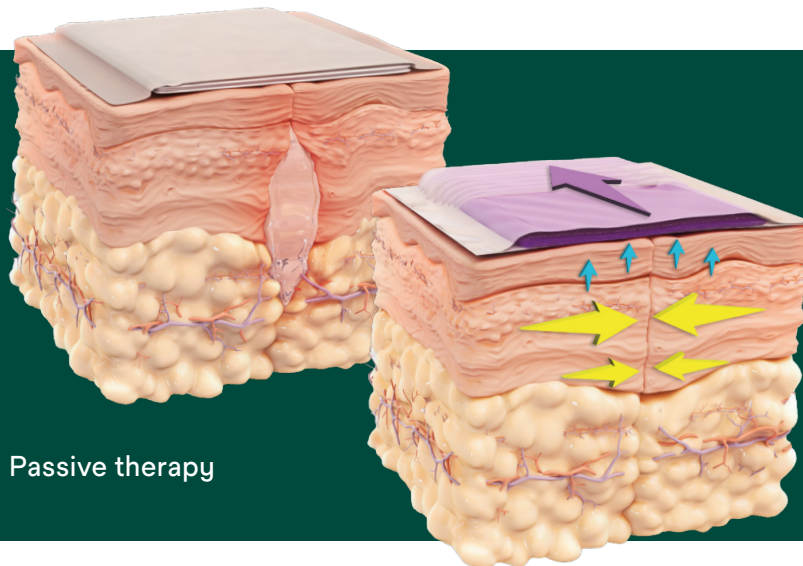
Reducing oedema.

\*Maximum length of therapy with 3M™ Prevena™ Therapy Platform is 7 days. Maximum length of therapy with 3M™ Prevena Restor™ Therapy Platform is 14 days.  
\*\*In a canister.

3M™ Prevena™ Dressings and 3M™ Prevena Restor™ Dressings can be applied to various procedures and anatomical locations.

# The advanced science of 3M™ Prevena™ Therapy.

Prevena Therapy utilizes continuous -125 mmHg negative pressure therapy, reticulated open cell foam (ROCF) dressing technology, and optimised exudate management (replaceable canister) over closed incisions to help enhance healing.



Passive therapy

Prevena Therapy

- Yellow arrow: Appositional force
- Blue arrow: Tissue decompression
- Purple arrow: Direction of fluid

## Designed to help optimise postoperative care:

- Contours allow for even distribution of negative pressure
- Adhesive film creates a barrier to external contaminants
- Improved fluid management\*
- Conforms to allow movement
- Contains 0.019% ionic silver to help reduce bacterial colonisation in the fabric

## How Prevena Therapy may help reduce postoperative oedema.

The effects of negative pressure therapy applied to intact skin were evaluated using finite element analysis (FEA).<sup>9</sup>

Based on the analysis, it is hypothesised that negative pressure therapy on intact skin provides volumetric expansion that may help:

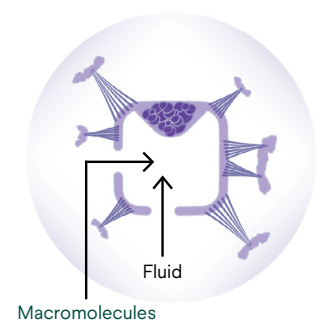
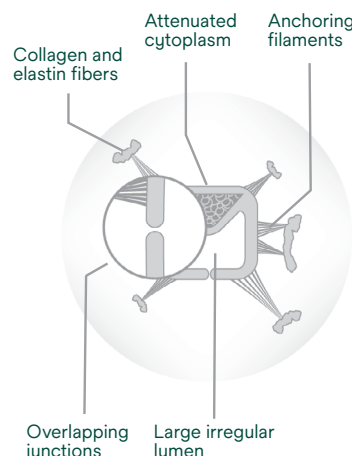
- Expand the tissue beneath the dressing, pulling the tissue open
- Lower local interstitial fluid pressure
- Open lymphatics to allow fluid clearance

### With oedema

Closed terminal lymphatic pore (overlapping endothelial cells)

### Without oedema

Open terminal lymphatic pore (Separated endothelial cells)

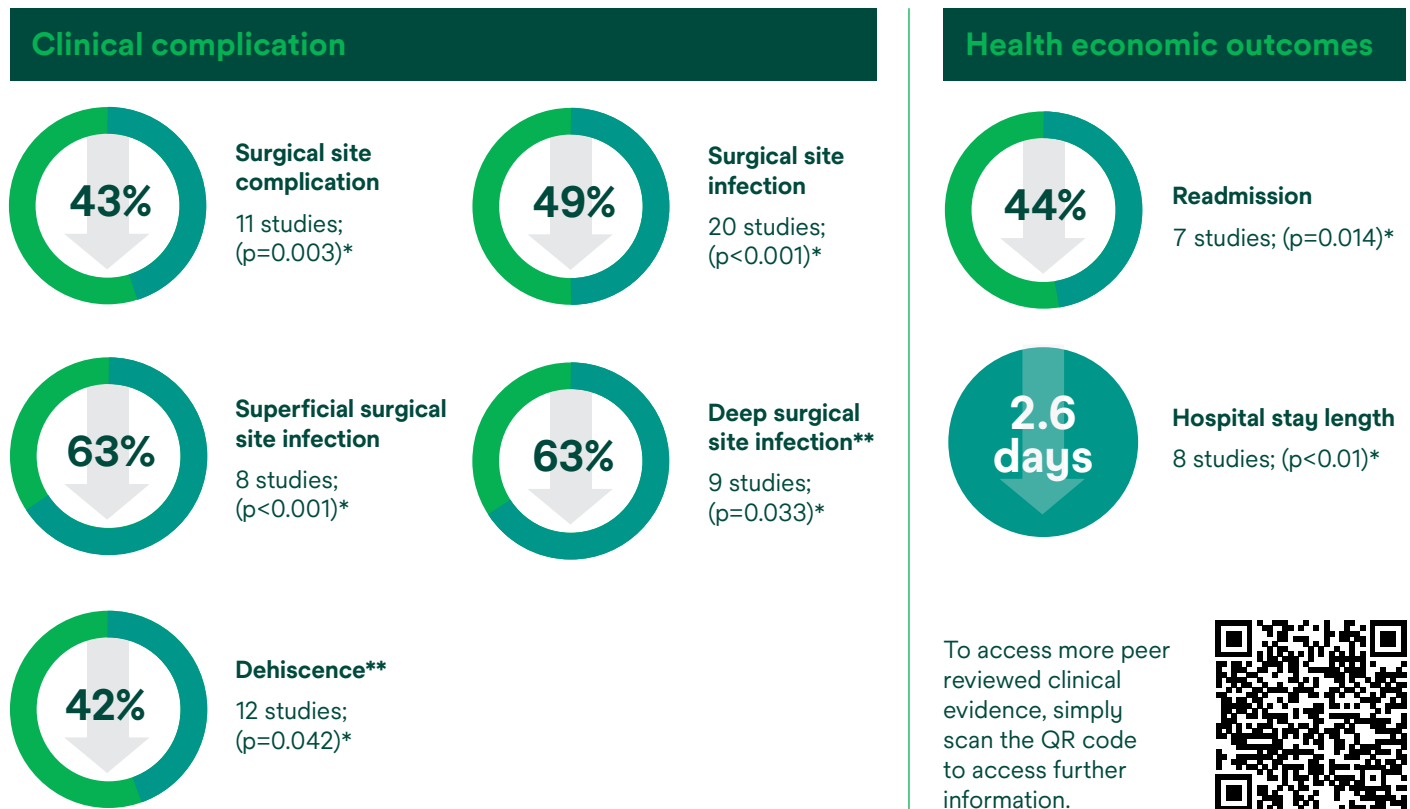


\*In a canister.

# Clinical evidence supporting the use of 3M™ Prevena™ Therapy is growing

A meta-analysis of 22 peer-reviewed studies across various abdominal surgical procedures demonstrated Prevena Therapy helped significantly reduce the risk of various surgical site complications (SSCs) while helping to improve health economic outcomes.<sup>10</sup>

## Reduced clinical complication risk:



## Backed by science. Trusted by many.

Prevena Therapy is utilised and trusted by many clinicians worldwide to help manage closed incisions for at-risk patients and procedures.



**200+**  
peer-reviewed  
clinical articles\*\*



**30+**  
randomised  
controlled trials\*\*



\*Statistically significant (p < 0.05).

Calculation(s) are derived based on the relative patient group incidence rate reported in this study.

\*\*As of November 2022.



# Rethink incision management.

**Acts as a barrier**  
Designed to minimise external contamination to help reduce surgical site complications.

**Precision designed**  
Dressings seamlessly conform to the patient for even distribution of negative pressure and allows for patient movement.

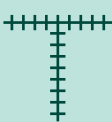
**Easy to use**  
A variety of peel and place dressings are available, plus customisable options.

**Shower-friendly**  
See Prevena Therapy Patient and Clinician Guides for additional details.

## 3M™ Prevena™ Dressings

### Linear Coverage

Prevena Peel and Place Dressings help protect and manage the environment of closed surgical incisions and remove fluid away from the surgical incision via the application of continuous negative pressure.



**Linear coverage**

Designed to manage linear, intersecting, and multiple incisions

Pre-shaped designs for peel and place application



3M™ Prevena™ Peel and Place Dressing – 13 cm



3M™ Prevena™ Peel and Place Dressing – 20 cm



3M™ Prevena™ Plus Peel and Place Dressing – 35 cm


Designed for flexibility and user customisation



3M™ Prevena™ Customizable Dressing

### Area Coverage

Prevena Restor Dressings offer comprehensive protection for a variety of anatomical locations. When combined with negative pressure, the dressings help provide stabilisation and help protect the surgical site and surrounding soft tissue from complications and swelling.



**Expanded coverage area**

Designed to extend coverage and manage the surgical site and surrounding soft tissue envelope.

Pre-shaped designs for peel and place application



3M™ Prevena Restor™ Arthro•Form™ Dressing



3M™ Prevena Restor™ Bella•Form™ Dressing



# Compatible with Solventum negative pressure wound therapy devices.



## 3M™ Prevena™ Plus 125 Therapy Unit

One single-use negative pressure therapy unit compatible with all 3M™ Prevena™ Dressings.

### Negative pressure features:

- Pre-set, continuous negative pressure therapy at -125 mmHg for up to 7 or 14 days\*
- Disposable, single patient use
- Rechargeable battery

### Specifications:

- Dimensions: Approx 8.9 x 16.3 x 5.49 cm
- Weight with empty canister: 0.29 kg



Prevena Dressings are also compatible with Solventum traditional negative pressure therapy devices: 3M™ V.A.C.® Ultra Therapy Unit, 3M™ ActiV.A.C.® Therapy Unit

## Ordering Information

SKU	Description	UOM
<b>Therapy Devices</b>		
PRE4010.S	3M™ Prevena™ Plus 125 Therapy Unit – 14 day	Each
<b>Dressings</b>		
PRE1055.S	3M™ Prevena™ Peel and Place Dressing – 20 cm	Case of 5
PRE1155.S	3M™ Prevena™ Peel and Place Dressing – 13 cm	Case of 5
PRE3255.S	3M™ Prevena™ Plus Peel and Place Dressing – 35 cm	Case of 5
PRE4055.S	3M™ Prevena™ Plus Customizable Dressing	Case of 5
PRE5055.S	3M™ Prevena Restor™ Arthro•Form™ Dressing – 33 cm x 30 cm	Case of 5
PRE5155.S	3M™ Prevena Restor™ Arthro•Form™ Dressing – 46 cm x 30 cm	Case of 5
PRE5255.S	3M™ Prevena Restor™ Bella•Form™ Dressing – 21 cm x 19 cm	Case of 5
PRE5355.S	3M™ Prevena Restor™ Bella•Form™ Dressing – 24 cm x 22 cm	Case of 5
PRE5455.S	3M™ Prevena Restor™ Bella•Form™ Dressing – 29 cm x 27 cm	Case of 5
<b>Accessories</b>		
PRE1095.S	3M™ Prevena™ 45 ml Canister	Case of 5
PRE4095.S	3M™ Prevena™ Plus 150 ml Canister	Case of 5
PRE9090.S	3M™ Prevena™ Therapy V.A.C.® Connector	Case of 10
<b>Kits</b>		
PRE1001.S	3M™ Prevena™ Incision Management System – 20 cm	Each
PRE1101.S	3M™ Prevena™ Incision Management System – 13 cm	Each
PRE3201.S	3M™ Prevena™ Plus Incision Management System – 35 cm	Each
PRE4001.S	3M™ Prevena™ Plus Customizable Incision Management System	Each
PRE5001.S	3M™ Prevena Restor™ Arthro•Form™ Incision Management System – 33 cm x 30 cm	Each
PRE5101.S	3M™ Prevena Restor™ Arthro•Form™ Incision Management System – 46 cm x 30 cm	Each
PRE5221.S	3M™ Prevena Restor™ Bella•Form™ Incision Management System – 21 cm x 19 cm	Each
PRE5321.S	3M™ Prevena Restor™ Bella•Form™ Incision Management System – 24 cm x 22 cm	Each
PRE5421.S	3M™ Prevena Restor™ Bella•Form™ Incision Management System – 29 cm x 27 cm	Each

\*Maximum length of therapy with 3M™ Prevena™ Therapy Platform is 7 days. Maximum length of therapy with 3M™ Prevena Restor™ Therapy Platform is 14 days.

# Discover more at Prevena Central.



Prevena Central is your one-stop platform for all things 3M™ Prevena™ Therapy. Designed with busy healthcare professionals in mind, Prevena Central provides incision management resources that help to advance the standard of care.

To access Prevena Central visit [go.solventum.com/prevenaau](https://go.solventum.com/prevenaau) or scan the QR code.



**Note:** Specific indications, limitations, contraindications, warnings, precautions and safety information exist for these products and therapies. Please consult a clinician and product instructions for use prior to application. This material is intended for healthcare professionals.

#### References:

1. Raymond DP, Pelletier SJ, Crabtree TD, et al. Surgical infection and the aging population. *Am Surg*. 2001;67:827-33.
2. Cruse P. Wound infection surveillance. *Rev Infect Dis*. 1981 Jul-Aug;3(4):734-7.
3. Graves, EJ. National Hospital Discharge Survey: Annual Summary. National Center for Health Statistics; Hyattsville, MD: 1987. 1989. Series 13, no. 99.
4. Alkaaki A, x-Radi OO, Khoja A, et al. Surgical site infection following abdominal surgery: a prospective cohort study. *Can J Surg*. 2019;62(2):111-117.
5. Pinkney TD, Calvert M, Bartlett DC, et al. Impact of wound edge protection devices on surgical site infection after laparotomy: multicentre randomised controlled trial (ROSSINI Trial). *BMJ*. 2013;347:f4305. Published 2013 Jul 31. 10.1136/bmj.f4305P.
6. Smyth ET, McIlvenny G, Enstone JE, et al. Four country healthcare associated infection prevalence survey 2006: overview of the results. *J Hosp Infect* 2008;69:230-48.
7. Falconer R, Ramsay G, Hudson J, Watson A; Highland Colorectal SSI Group. Reducing surgical site infection rates in colorectal surgery - a quality improvement approach to implementing a comprehensive bundle. *Colorectal Dis*. 2021 Nov;23(11):2999-3007
8. Wilkes RP, Kilpadi DV, Zhao Y, et al. Closed Incision Management With Negative Pressure Wound Therapy (CIM): Biomechanics. *Surgical Innovation*. 2012;19(1):67-75.
9. Haridas B, Kieswetter K, Haggerty M. Test Report: Negative Pressure Therapy on Intact Skin: Poroelastic Finite Element Modeling of Interstitial Fluid Pressures. DOC- 0000049240 Rev A, 1-13. 6-27-2019. San Antonio, TX, KCI. Ref Type: Report.
10. Collinsworth A, Mantyh C, Silverman R, et al. Closed incision negative pressure therapy versus standard of care over closed abdominal incisions in the reduction of surgical site complications: A systematic review and meta-analysis of comparative studies. Presented at the Symposium on Advanced Wound Care Spring/Wound Healing Society Meeting, April 26-30, 2023, National Harbor, MD



**KCI Medical Australia Pty Ltd** | Building A, 1 Rivett Road, North Ryde NSW 2113 | 1300 524 822 | [solventum.com/en-au](https://solventum.com/en-au)  
**InterMed Medical Limited** | 71 Apollo Drive, Albany, Auckland 0632 | 0800 524 222 | [intermed.co.nz](https://intermed.co.nz)

©Solventum 2025. Solventum and the S logo are trademarks of Solventum or its affiliates. 3M and the 3M logo are licensed trademarks of 3M.