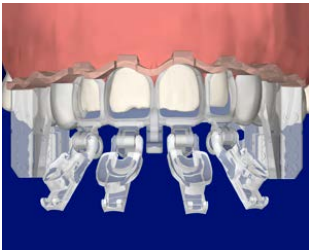
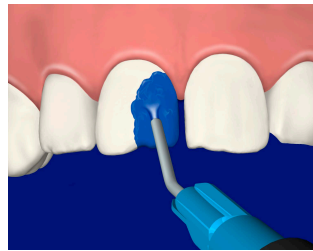


3M™ Filtek™ Matrix Composite Filling Technique

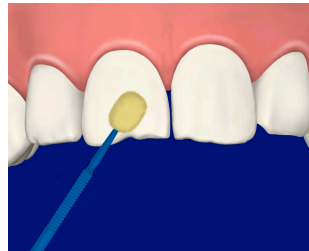
See Instructions for Use
for full details.



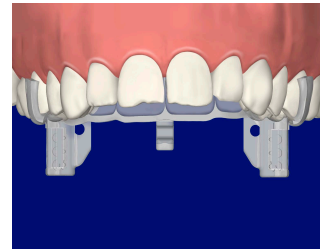
1. Try on veneer matrix to ensure proper fit.



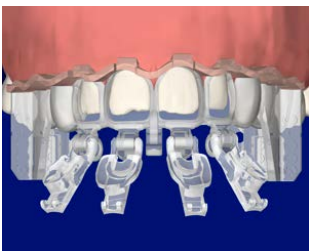
2. Apply and rinse etchant on teeth.



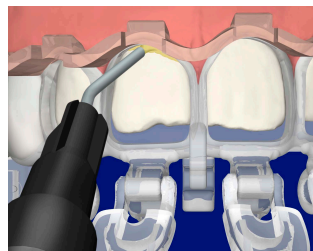
3. Apply, air dry, and light cure adhesive on teeth. Ensure contacts aren't bonded.



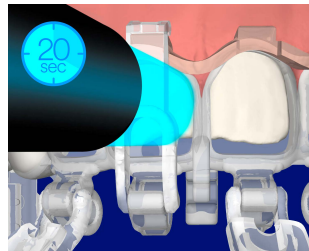
4. Place lingual matrix.



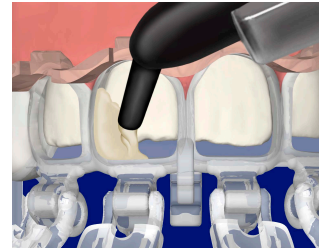
5. Place labial matrix. Clamp matrices together on distal ends.



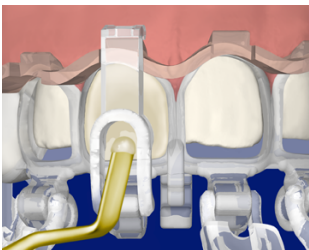
6. Line the gingival margin with flowable composite.



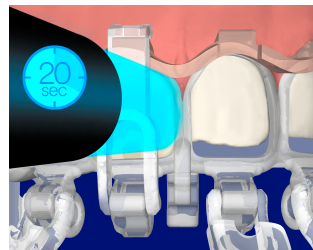
7. Close the door and light cure for 20 seconds.



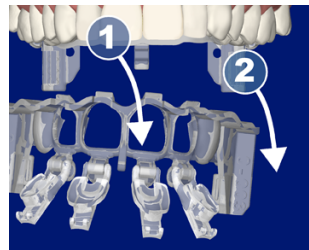
8. Open door and place universal composite in matrix cavity. Slightly overfill.



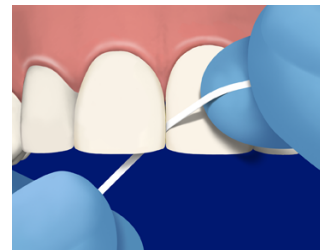
9. Close door. Remove excess composite around door and gingival margin. Clear vent port of composite.



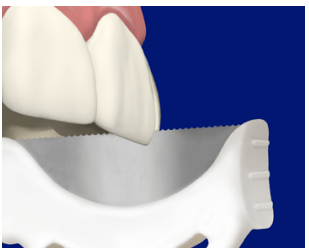
10. Light cure for 20 seconds per surface. Repeat steps 6-10 for all cavities.



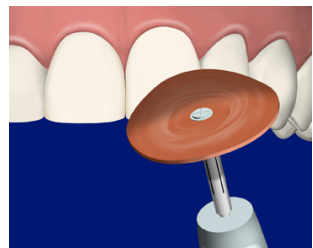
11. Open doors. Remove labial matrix first, followed by lingual matrix.



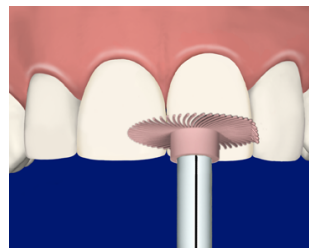
12. Check interproximal contacts using floss.



13. If necessary, separate and smooth contacts using bur, blade, saw, or strip.



14. Remove flash and contour teeth using a bur or Sof-Lex disc.



15. Finish and polish using 3M™ Sof-Lex™ Diamond Polishing System.



16. Final Outcome.