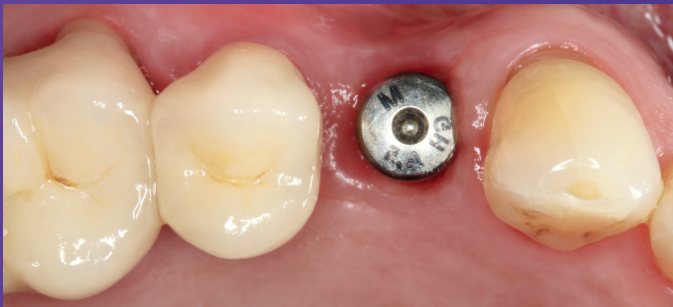


Production of a crown on implant: Closed implant impression technique using 3M™ Impregum™ Penta™ Super Quick Medium Body Polyether Impression Material

Clinical dentistry and photography by: Dr. Gunnar Reich, Munich, Germany
Lab work by: MDT Nicole Freund, Tutzing, Germany

About the Case:

After healing time, patient needed final prosthetics work on implant in first pre-molar regio. Impression made with 3M™ Impregum™ Penta™ Super Quick Medium Body Polyether Impression Material in the closed implant (monophase) impression technique.



Initial situation: Implant (regio first premolar) six months after implantation. Healing cap in situ.



Syringing of 3M™ Impregum™ Penta™ Super Quick Medium Body Polyether Impression Material around the impression coping with the 3M™ Penta™ Elastomer Syringe.



Impression coping securely fixed in 3M™ Impregum™ Penta™ Super Quick Medium Body Polyether Impression Material. The impression was taken using the monophase technique.



Final veneered all-ceramic crown cemented on implant abutment.